

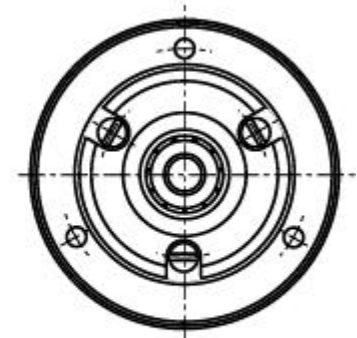
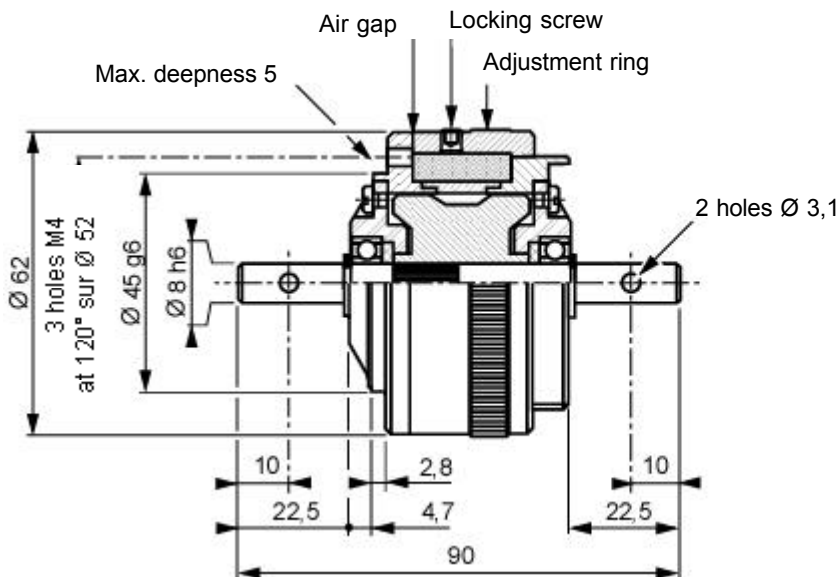
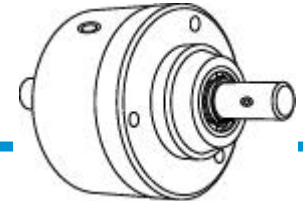
Torque limiters

LC 10 ref: 807.341.01
 LC 20 ref: 807.341.02

Specifications

Type		LC 10	LC 20
Transmission torque (N.m)	Mini	0,30	0,60
	Maxi	1	2
Internal rotor inertia (Kg.m ²)		29.10 ⁻⁶	
External rotor inertia (Kg.m ²)		390.10 ⁻⁶	
Weight (kg)		0,70	
Heat dissipation (W)*		25	

* Heat dissipation is the mechanical power (P = cw) maximum allowable.



Utilization

- Mounting must be made without any stress.
Lubricated for life (other internal lubrication not allowed).
- The transmission torque can be adjusted with an adjustment ring which is immobilized by a locking screw (zero air gap = minimal coupling).
- The standard device is designed for horizontal and vertical shaft orientation,
- In normal use, the outside temperature of the device can increase up to 100°C, without damage.

Safety

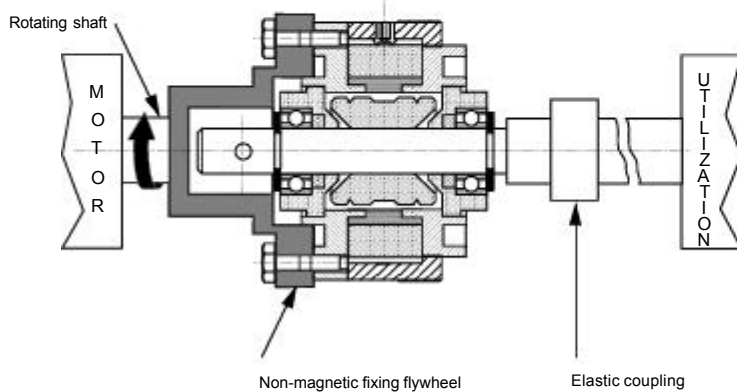
- If the device is to be used in dusty, humid or corrosive environment, special protection needs to be considered.

Maintenance

- The mechanical configuration of this type of limiter forbids any dismantling.

Recommended mounting principles:

In line mounting



Parallel mounting

