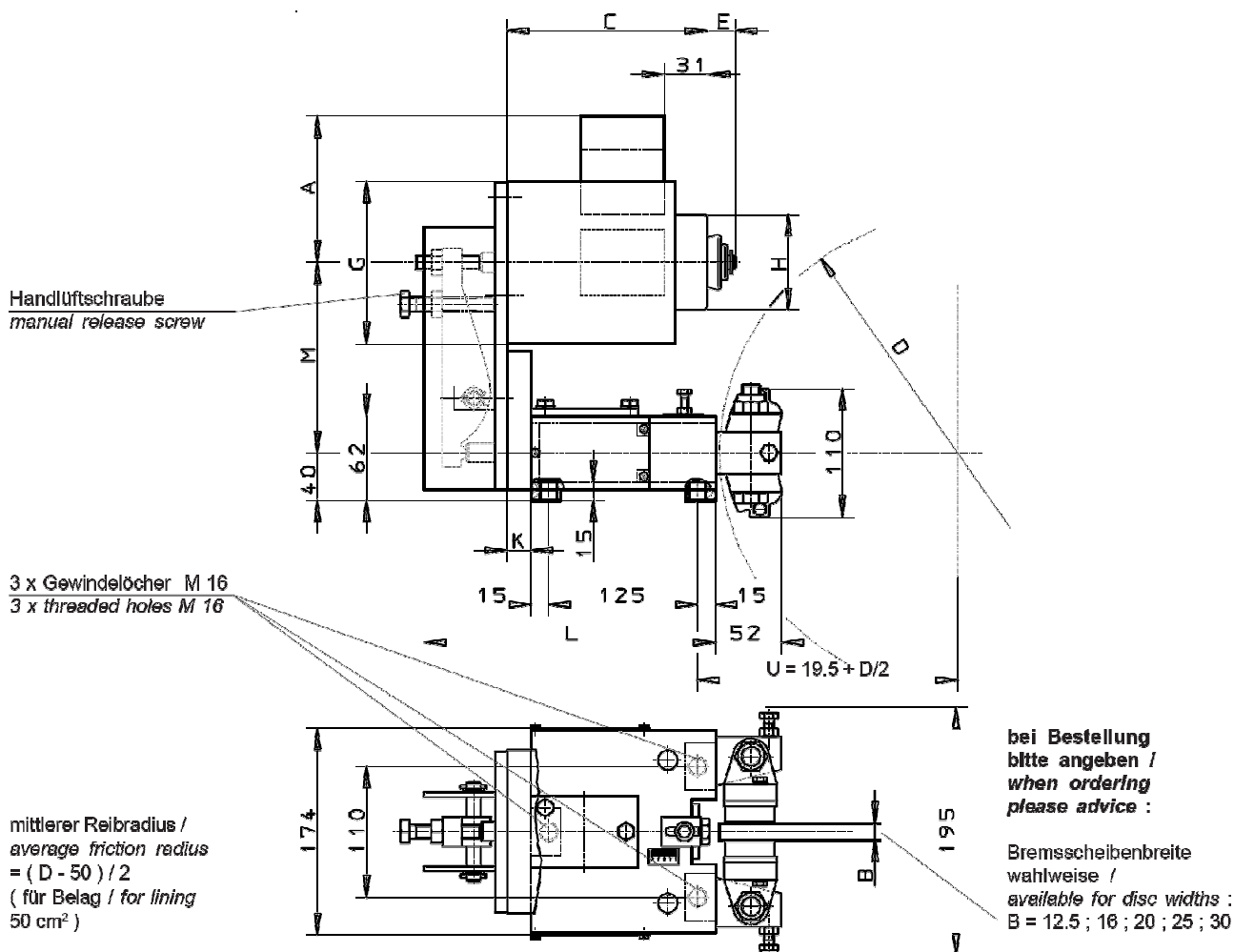


Kompakt-Scheibenbremse
fail-safe, über Magnet gelüftet
SK4-M

M 700 E-DE
Seite 1 / 1
06.2008



dimensions depending on selected lining size											
SK4-M			A	C	E	G	H	K	L	M	
Lining 50 = Standard			126	172	14,5	Ø 137	Ø 80	20	245	160	
lining 100			137	202	25	Ø 165	Ø 95	50	267	170	
max. Braking torque in Nm ($\mu=0,4$) on disc-Ø D2											
Type	200	250	315	400	500	630	710	800	900	1000	1120
SK4-M1	70	95	125	165	215	275	315	360	405	455	510
SK4-M2	255	340	455	600	770	995	1135	1290	1460	1630	1840
SK4-M3	225	300	400	530	680	880	930	1140	1290	1440	1625
SK4-M4	420	560	740	980	1260	1620	1845	2100	2380	2660	2995

Caliper brakes SK4-M are fitted with a DC solenoid. Versions „SK4-M2 and SK4-M4“ are connected via external „switch over control unit“ as per data sheet M 1501 280 E)

Alterations reserved

Siegerland Bremsen – Emde GmbH & Co. KG – Auf der Stücke 1-5 – D-35708 Haiger, Germany
Tel.: +49 2773 94000 – Fax: +49 2773 9400-10 – e-mail: info@sibre.de – www.sibre.de